

3D LASER SCANNER PICZA LPX RE Series



Complete Reverse Engineering Solutions



Achieve superior product development by turning hand concepts into dimensionally perfect models

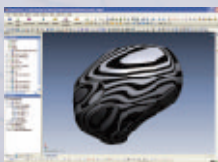
Revolutionary advances in reverse engineering software will change the way you work



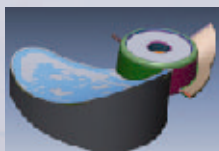
Powered by **RAPIDFORM** Technology
Pixform Pro II
Included with every LPX RE model

Roland Pixform Pro II software will drastically reduce product development time thanks to its unique and intuitive solid modeling approach.

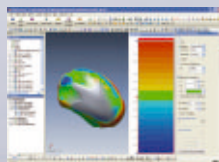
- Generates high quality parametric solid and surface CAD compatible models
- Features user friendly interface similar to major CAD applications
- Shows deviation analysis between scanned data and finished part using the Accuracy Analyzer™ feature in Pixform Pro II
- Exports models directly to CAD, with modeling history



Environmental mapping confirms surface accuracy



Multiple CAD-type functions build perfect models



Accuracy Analyzer™ confirms scan/model deviation

Lower product development costs and reduced time to market

The LPX RE series are complete packages offering a range of easy-to-use high performance compact 3D scanners with fully-featured professional software and easy to follow tutorials. LPX laser scanners include everything you need for fast, intuitive reverse engineering solutions.



3D LASER SCANNER
PICZA Model **LPX-60 RE**
Compact and most affordable

3D LASER SCANNER
PICZA Model **LPX-600 RE**
Large, versatile scanning capacity

3D LASER SCANNER
PICZA Model **LPX-1200 RE**
High resolution detailed scanning

