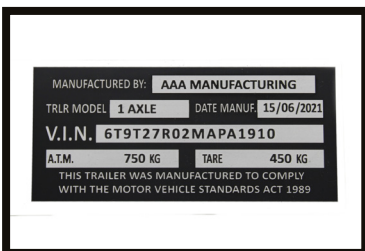




\$13,495.00
Excl. GST

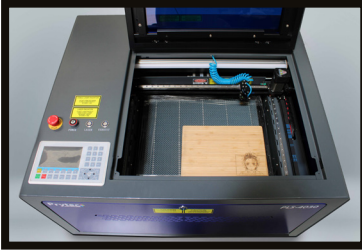
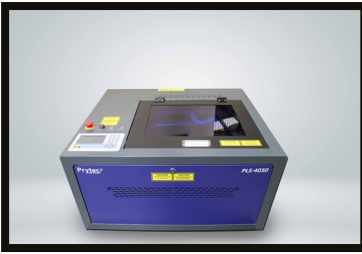
High speed , high versatile machines, bundled with powerful easy to use software. The ideal partner for your business! Whether you are just starting up, looking at speeding up production or expanding your portfolio, a Prytec laser system will undoubtedly improve your bottom line! Highest quality components ensure minimal maintenance requirements.

- ✓ Supplied with all ancillary equipment. (Extraction fan & air assist pump)
- ✓ 2 Year Warranty including laser tube. (Excluding mirrors and lenses) - subject to regular 6 monthly maintenance



SPECIFICATIONS:

Overall Size:	830mm x 800mm x 500mm
Laser Source:	30 Watt CO2 Metal laser tube
Max Engrave Speed:	1300mm/sec
Max Cut Speed:	50mm/sec
Location Precision:	Less than 0.01mm
Scanning Precision:	up to 1000DPI
Minimum Character Size:	1.0mm x 1.0mm
Graphic File Types:	HPGL, PLT, BMP, DXF, AI,..



FEATURES:

- **Work table:** 400mm x 300mm
- **Engrave area:** 360mm x 290mm
- Convenient Desktop Unit
- In-line red light pointer
- Motorised table height
- Wifi & USB connection

- OPTIONAL ACCESSORIES -

ADVANCED FUME EXTRACTION

SPECIFICATIONS:

Overall size: 556mm x 605mm x 1470mm

Max air flow: 1500m³/hr, Air Pressure 2.3kPa

Max duct size: 150mm

Noise level: <75dBA

Power rating: 220V, 50Hz or 110Hz, 60Hz

1 Year Warranty (Excludes consumables)

\$2,995.00

Excl. GST

PFE *Advanced Fume Extraction*



- PLS ADVANCED LASER SYSTEMS - AUTHORISED DEALERS -

NSW

Techie Tools
0490 048 307

info@techie-tools.com.au

QLD

Sign to Badge
07 3412 0285

simon@snsolutions.com.au

VIC

Prytec Head Office
03 8372 6444

sales@prytec.com.au

WA

Ramlec Enterprises
0430 299 289

admin@ramlec.com

SA

Prytec Office
0412 968 802

michael@prytec.com.au

TECHIE
TOOLS



Prytec
SOLUTIONS

RAMLEC ENTERPRISES

Prytec
SOLUTIONS